

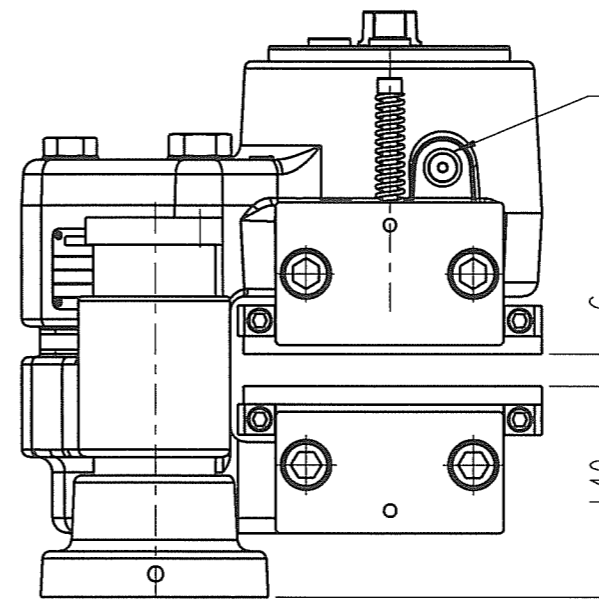
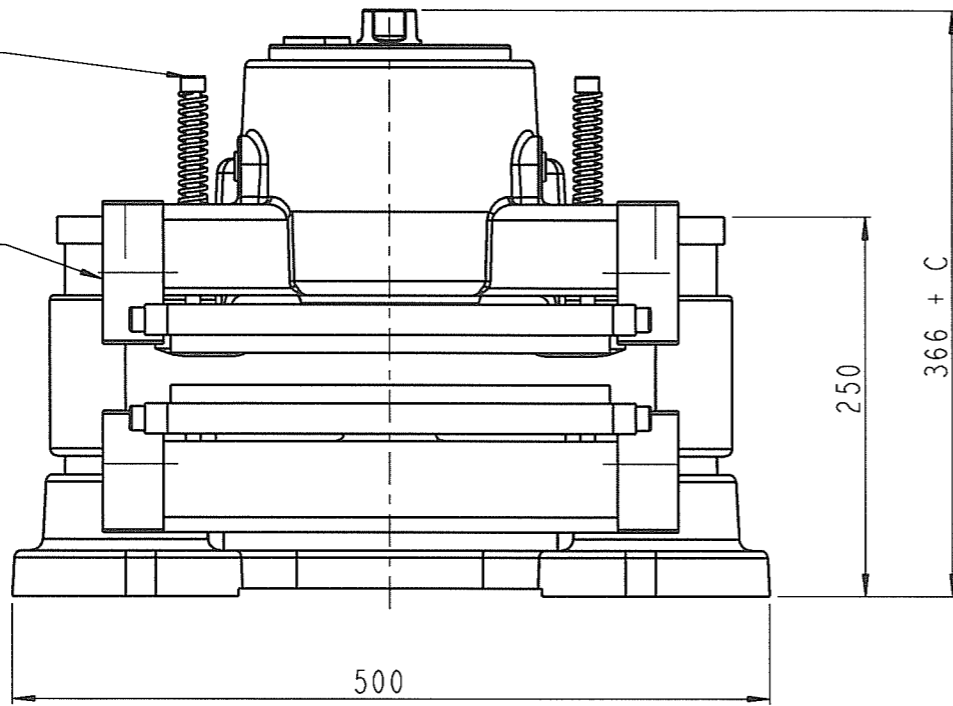
Rev. D 91850 HMU 01/14  
 Rev. E 92982 RRH 13.09.2005  
 Rev. F 93093 NCH 21.12.2005

Denmark: Jennbanevej 9, 5882 Vejstrup, Denmark  
 Germany: Kirchnerstrasse 42, D-32257 Bünde, Germany

This drawing/document is the sole property of  
 Svendborg Brakes A/S and may not be copied,  
 given to a third party or used for unauthorized purpose

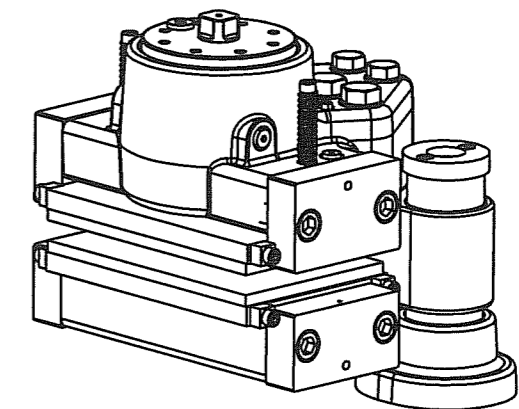
Bolts M10 grade 8.8  
 Mv = 27 ± 2Nm  
 Dry

Bolts M20 grade 8.8  
 Mv = 305 ± 20Nm  
 With MoS2



Active pressure port  
 1/4" BSP (2x)  
 May only be used in version  
 for active pressure

Brake disc thickness = 20-50

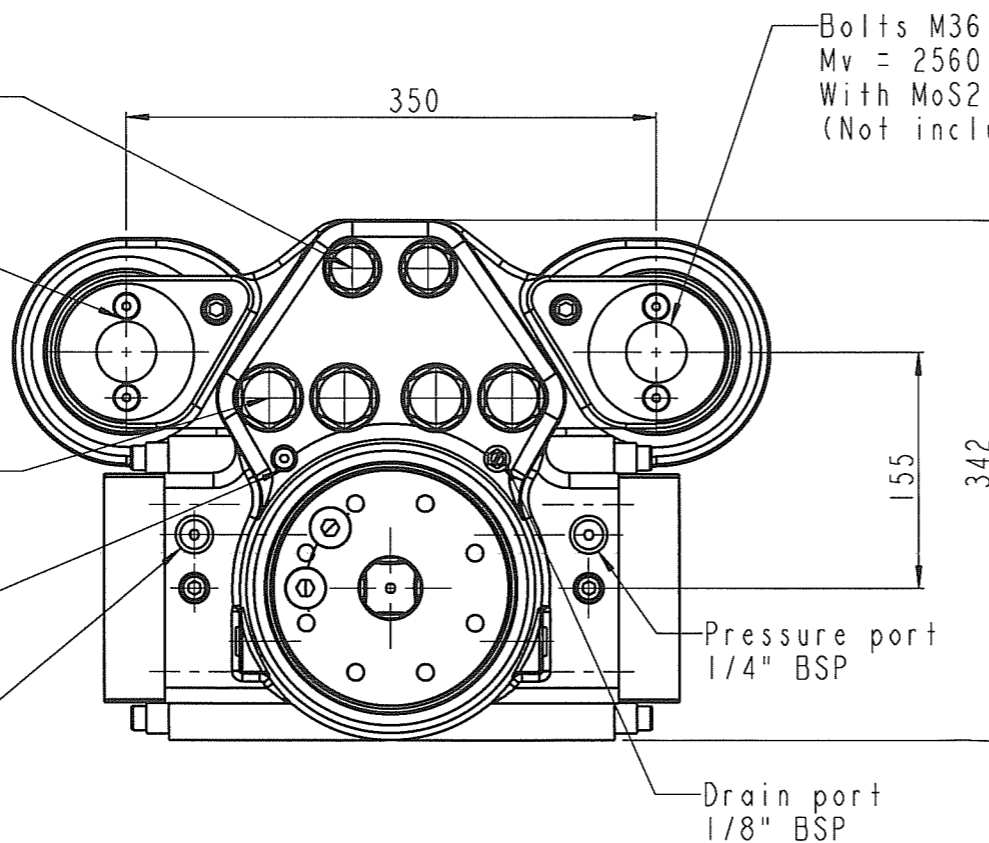


Bolts M20 grade 10.9  
 Mv = 430 ± 20Nm  
 With MoS2

Bolts M8 grade 8.8  
 Mv = 23 ± 2Nm  
 Dry

Bolts M24 grade 10.9  
 Mv = 740 ± 30Nm  
 With MoS2

Bolts M36 grade 10.9 (2x)  
 Mv = 2560 ± 40Nm  
 With MoS2  
 (Not included in brake)



Drain port  
 1/8" BSP

Pressure port  
 1/4" BSP

Pressure port  
 1/4" BSP

Drain port  
 1/8" BSP

Brake can move on shafts:  
 Without positioning system mounted: 10mm upwards and 5mm downwards from nominal mounting dimension (140)  
 With standard positioning system mounted: 2mm upwards and 1/2 air gap downwards from nominal mounting dimension (140)

C = Brake disc thickness  
 Mounting data, see drawing: 490 1639  
 Weight: Approx. 180 kg incl. brake pads

Tolerances for corner radii, angles, chamfers and threads according to: DS/EN 22768 - m		✓ Indicates Ra in µm	All dimensions in mm	Accep. for prod. by
Drawn by M.Pallesen	Date: 16-Nov-00	Description BSFI 3000-MSXXS-200		Drw+Design checked by <i>A.A. [Signature]</i>
Drawing No. 4901640		Revision F	Scale 1:5 (A3)	
<b>SVENDBORG BRAKES</b>		Sheet 1 of 1 sheets		